



# Warehouse Management Only Mode WOM for BC

Microsoft Development Center Copenhagen  
&  
Partner InterRadish

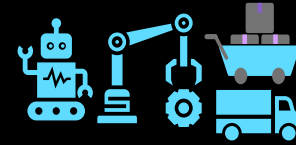
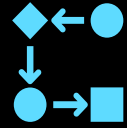
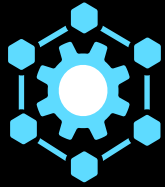


**D365 WMS & Warehouse Only Mode**

10 years of Microsoft Dynamics 365 WMS in cloud

# Power of WMA - Warehouse Mobile App

# Powerful WMS with build in business intelligence



Warehouse Only  
mode  
ERP AGNOSTIC

Integrated processes  
Production, Procurement,  
Quality, Retail, Project, Sales, Returns

Scanning  
Warehouse Mobile App  
Out of box for Android,iOS  
and Windows

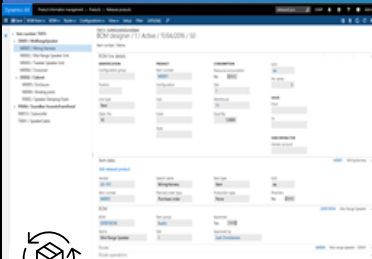
Material handling &  
Carrier Integration

Embedded  
Analytics and  
Process mining

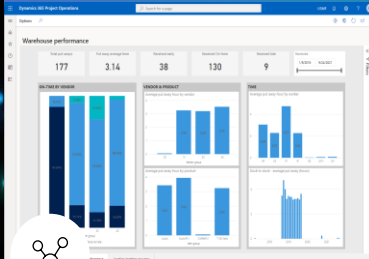
Continuous  
updates

Manufacturing(Discrete, Lean, Process, Mixed-mode), Automotive, eCommerce, Retail, Healthcare , Food, High-tech

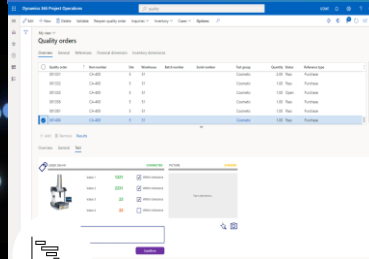
Inventory  
Management



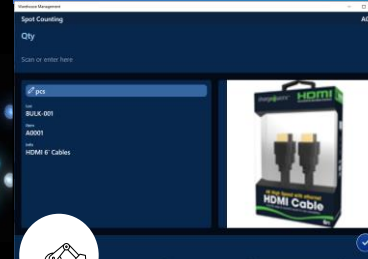
Inbound



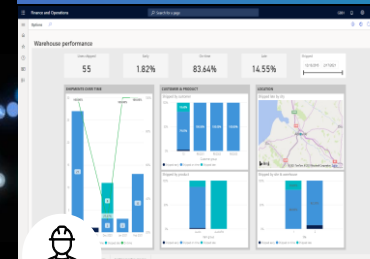
Quality Management



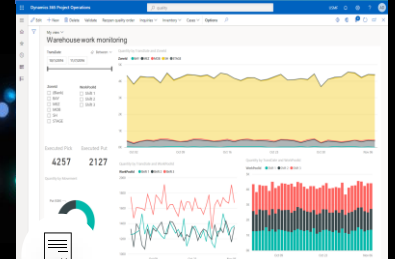
Warehouse  
Operations - modern  
warehouse app



Outbound

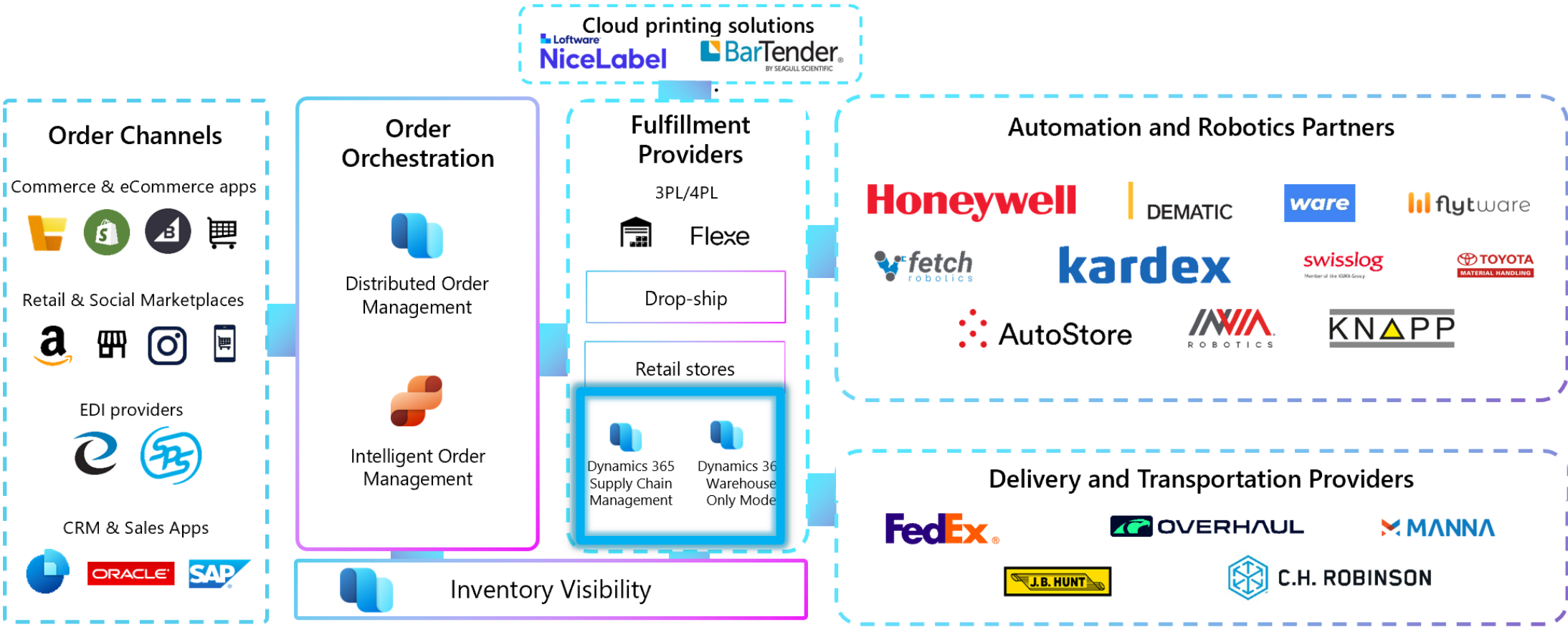


Labor management



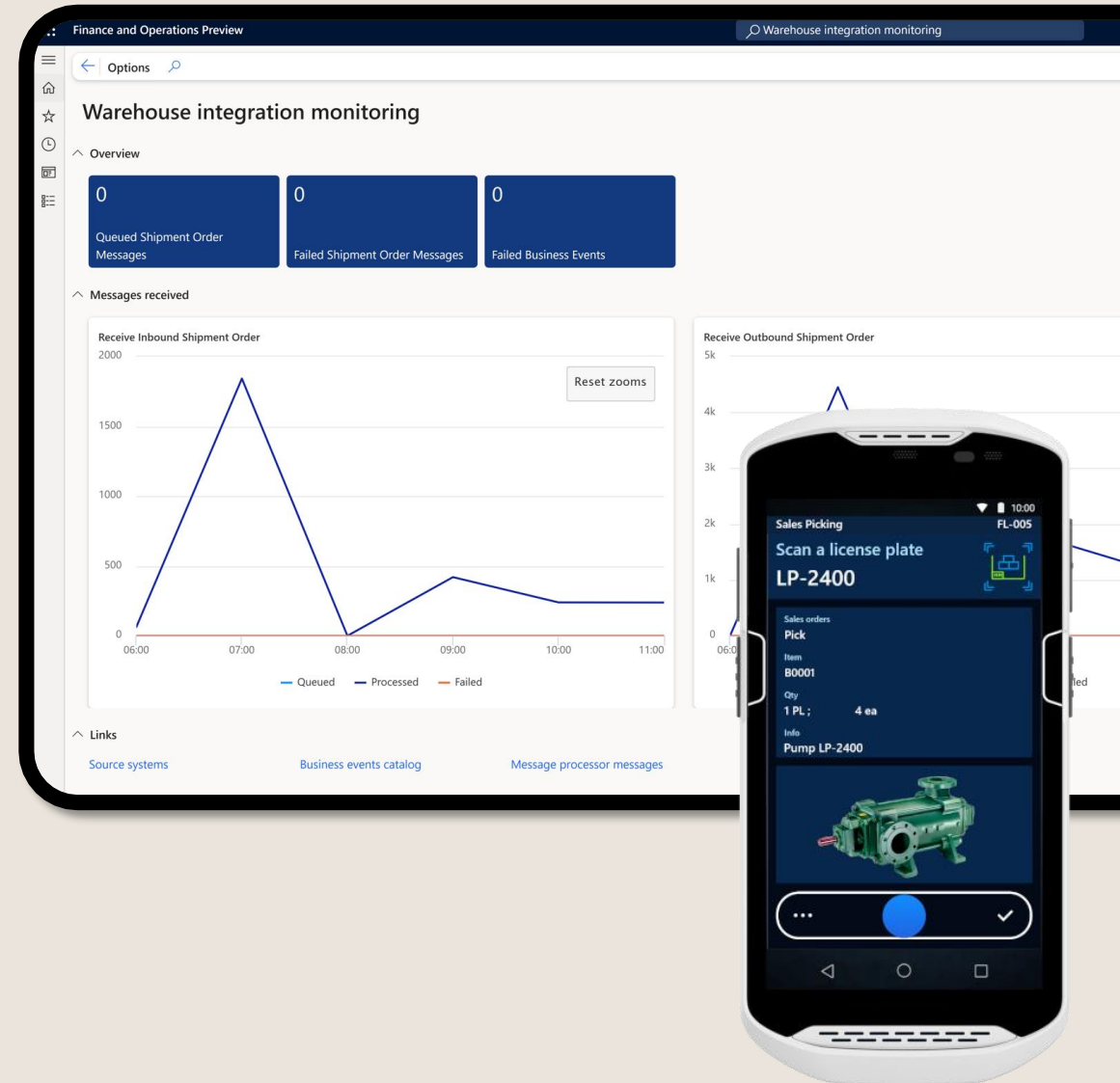
# Rich connectivity with an ecosystem of 1st and 3rd party solutions.

## Next-gen composable distribution ecosystem



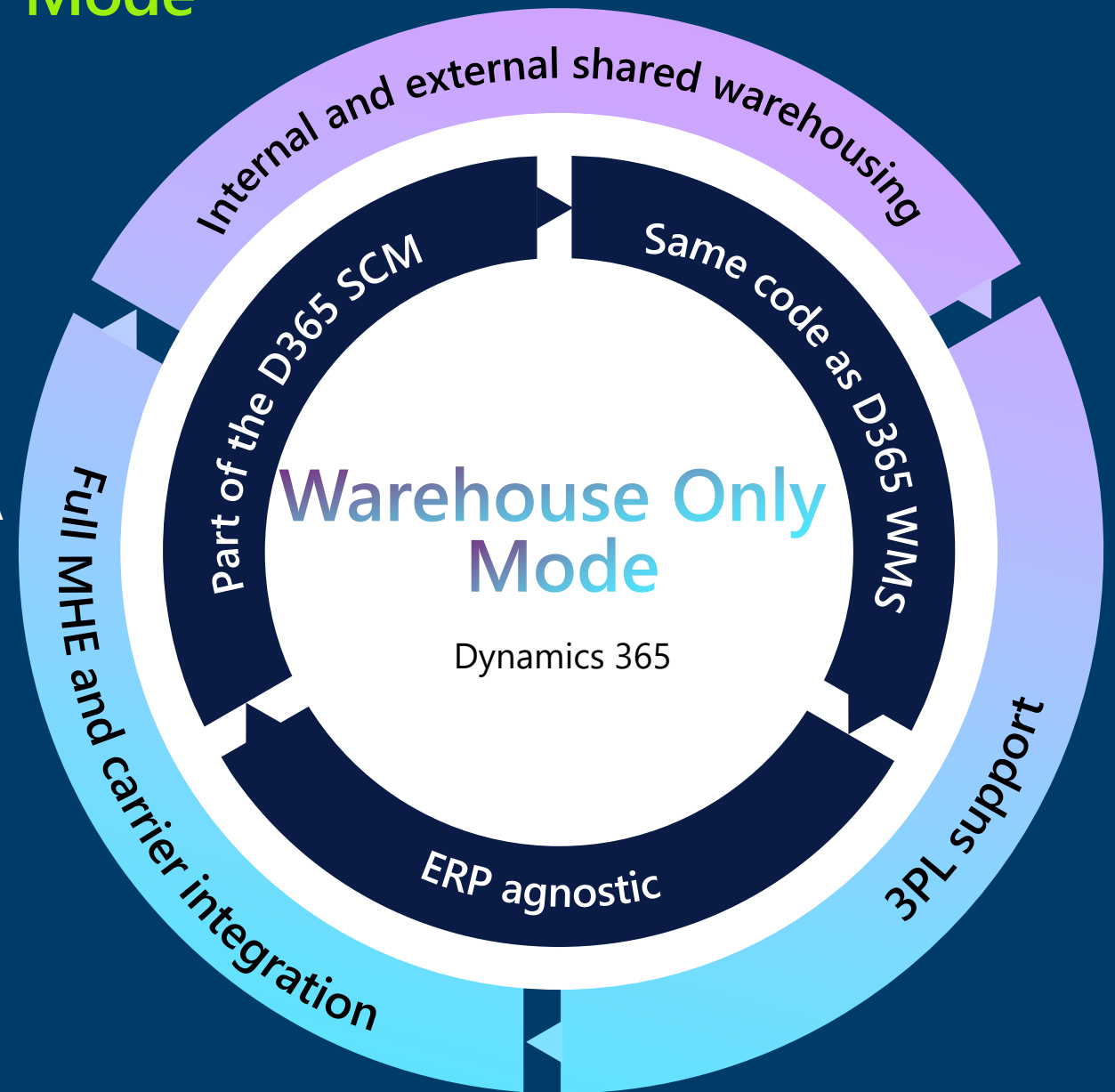
# WOM – Warehouse only mode capabilities and benefits

1. **Matured & agile** cloud-native **warehouse solution** with the **same features as D365 WMS**
2. **full set of interfaces and events** (pre-created inbound and outbound messages) for rapid integration with any ERP
3. **Works with F&O, BC** and can be **integrated with any external ERP** or ordering system
4. **Easy to configure, customize and extend**, tailored to unique complex WMS requirements
5. **Supports shared warehousing scenarios** where legal entities share space and workers using WOM
6. **Supports ownership dimension** for shared warehousing scenarios and consignment
7. **Same** as Dynamics 365 SCM **license**
8. Operates with **Warehouse Management mobile app**
9. **Flexible**, allowing for **multiple deployment options**
10. Data Collection (**Scanning**) and Enterprise **Label Printing**



# Microsoft D365 Warehouse Only Mode uptake

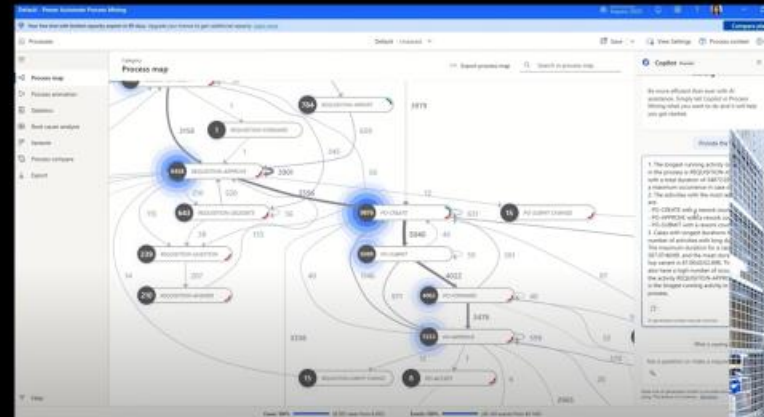
- 160+ companies interested in first few months after release in July 2024
- Multiple contracts signed for 3PL, shared warehouse and WMS only scenarios.
- Multiple companies are implementing
- Retailer from EMEA signs WOM contract to enable 900+ warehouses and 8500+ Warehouse workers to use WMA app
- Global brewery requests WOM for unification of Warehouse across multiple legacy ERP systems.
- **WOM is live solving multi scenarios like:**
  - WOM connected with on-prem ERP
  - WOM used to enable automation from AutoStore and connected to legacy ERP.
  - 3PL scenarios enabled
  - Huge shared warehousing deployment in Germany enabling storage for multiple internal companies.





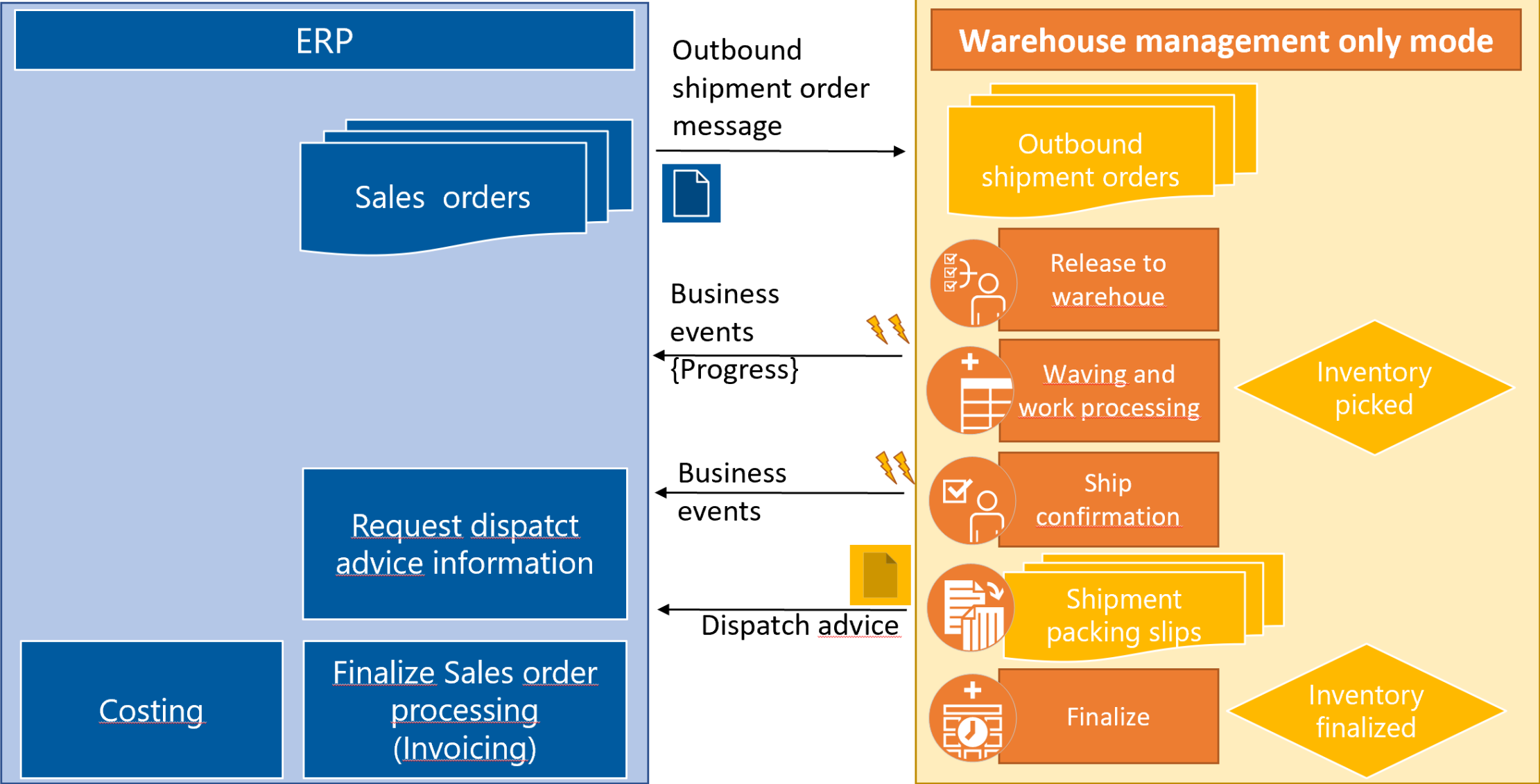
# Drive WMS innovation

- Copilot/Agent powered process mining and workflow configurations
- Warehouse computer vision and drone adoption
- Worker and manager Co-Pilot powered cockpits for shipment/load monitoring
- Warehouse digital twin, task route optimization & advanced task interleaving
- Waveless picking / Order streaming
- Warehouse Execution System – WES incl. synchronized picking and lead-times monitoring
- Automated workflow configuration change
- Seamless integration between dock scheduling and load picking
- Advanced re-counts, multiple counting work per location, counting by LP .....
- And more.....

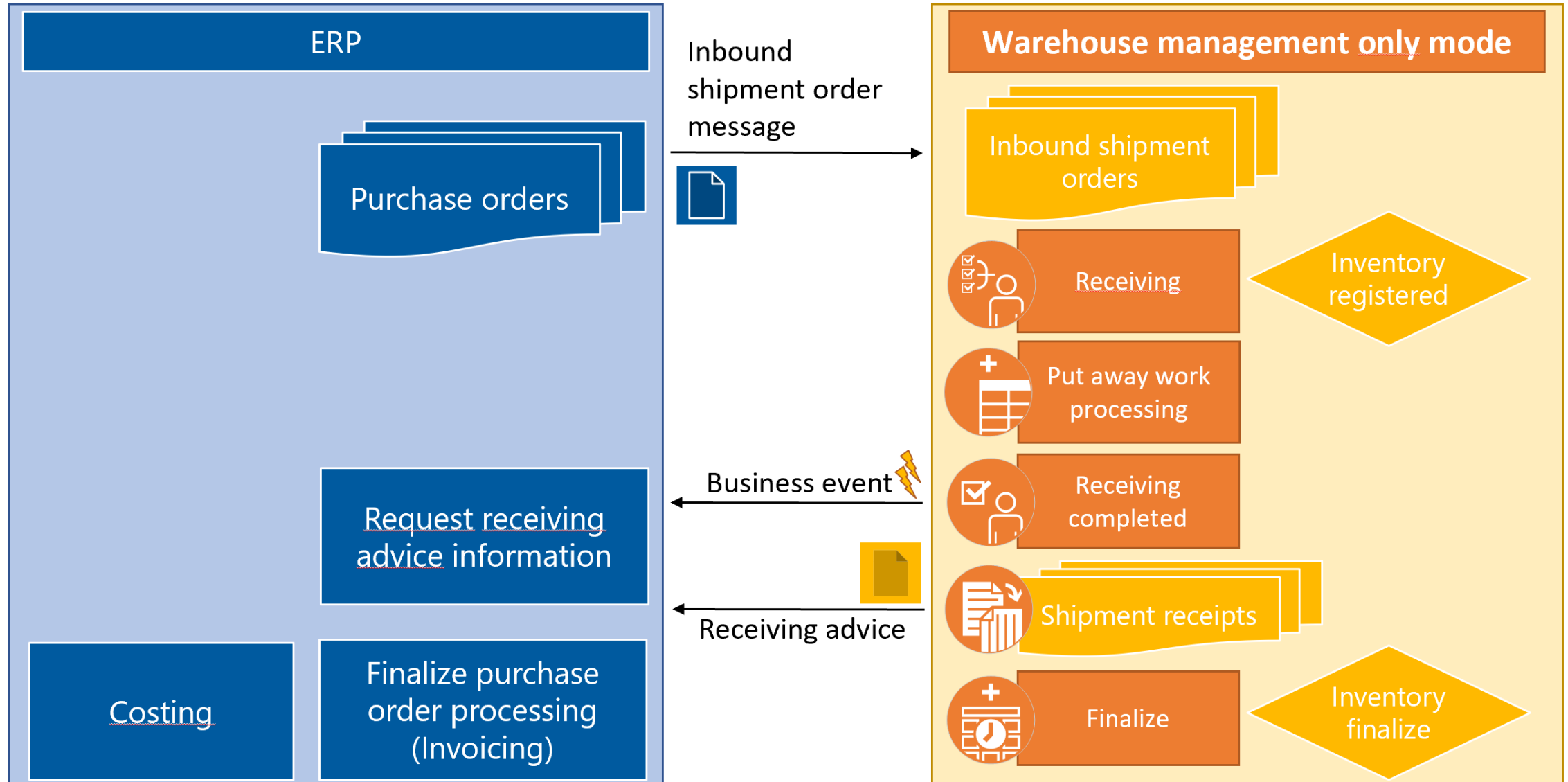


# Warehouse Only Mode – WOM Architecture

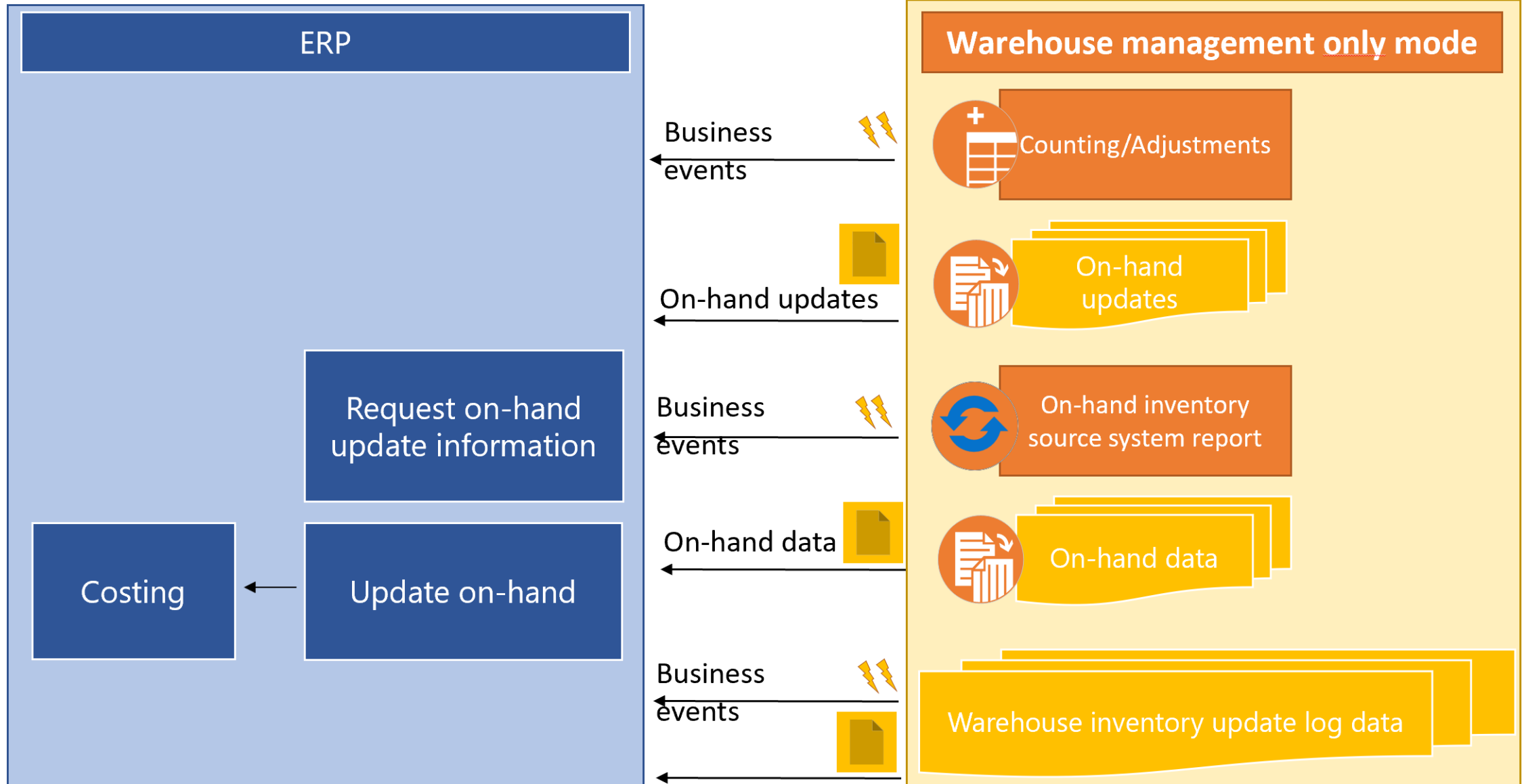
# Outbound shipment orders



# Inbound shipment orders

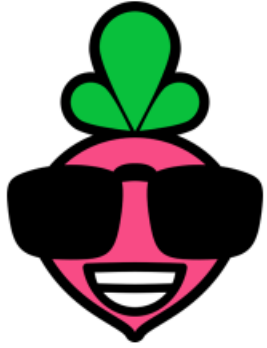


# Inventory management



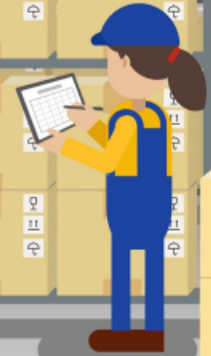
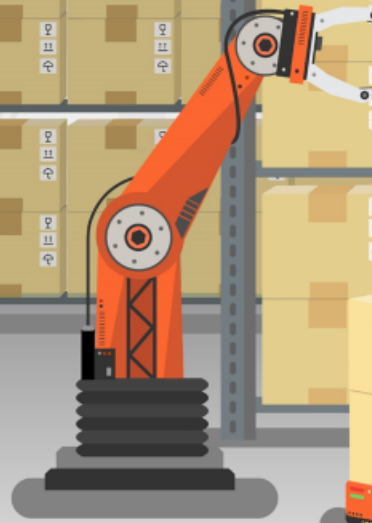
# Partner InterRadish WOM – BC Demo





# InterRadish

100% Focused on Dynamics 365  
Warehousing and Automation



# InterRadish expertise

- Automation
  - D365 WMS using MHAX
  - Advanced deployments without MHAX using Azure ecosystem tools
  - Program management, hardware selection and system design
  - Process optimization
- Warehouse management only mode (WOM)
  - Solution design & architecture
  - Integration capabilities
- Simple & complex warehouse deployments
  - Warehouse layout and process optimization
  - Device sourcing
  - Process design
  - WMS configuration, development and deployment





# Live Demo



# Warehouse only mode

- GA as of version 10.0.36 (Sept 15, 2023)
- D365 WMS can be used as a standalone WMS solution
- Inbound, outbound shipment orders and inventory segregation using an ownership dimension

*Native support for 3PL and shared warehousing concepts typical to the logistics industry.*



**Want to learn more? Check out our WOM learning center for updates.**



# Q&A